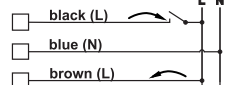
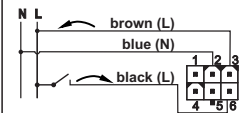


5

## Electrical connection

Cable connection 3x0,75mm<sup>2</sup>

Molex connection



Switch off power supply before making electrical connections or servicing to prevent electrical shock and equipment damage!

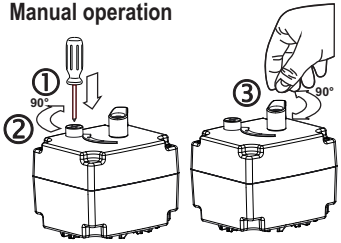


## WARNING

- The actuator must be protected by a fuse 1A.
- It is not allowed to open the actuator housing!
- The actuator must be electrically connected in accordance with technical norms.
- Observe the correct connection voltage!
- Installers, and users are responsible for the safe and proper installation / operation of the actuator.



## Manual operation



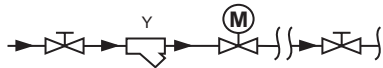
## Manual operation:

1. With screwdriver push the button down.
2. Turn the button for 90°.
3. Turn the handle of actuator for 90°.

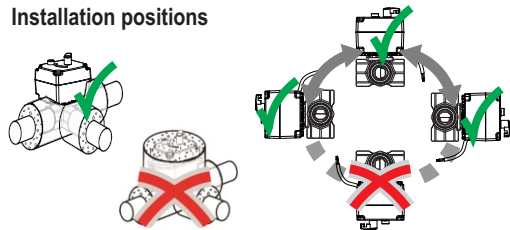
## Note:

When the operation button for manual operating is in MAN position, actuator stays in permanent position irrespective of control signal.

## Installation recommendation for valves



## Installation positions



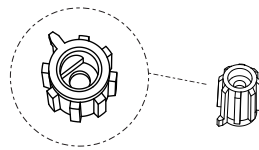
## Safety information:

- Before installation wash pipes, sealing material must not go inside the valve.
- During installation, avoid soldering or welding near the valve.
- Any deterioration or destruction of any part of the valves shall result in the need to replace the complete valve: alterations to any part of the complete valve shall result in the valve no longer being in compliance with the performance requirements of this document.
- Place of assembly must be protected against frost, the device must be protected from chemicals, paints, detergents, solvents and their vapors and other environmental influences (vibration).
- All installations should be performed in accordance with existing local installation regulations and codes of practice where they exist.
- It's imperative to follow the installation instructions of the valve manufacturer.
- If the valve is installed in the heating installation the water quality in the system has to comply with the VDI 2035 requirements.

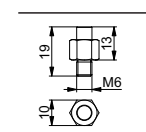
6

## Adapter kit

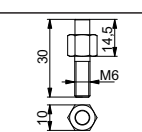
Enclosed mounting kit for FIRŠT FMV 130E valve, code 58104



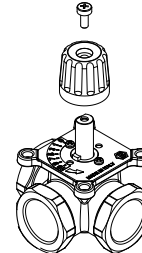
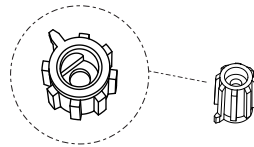
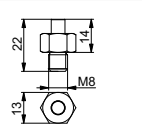
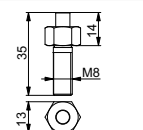
DN 15-25 valve



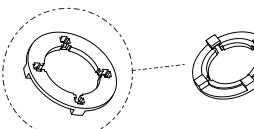
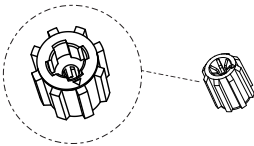
DN 32-50 valve



Optional U-MV EURONORM mounting kit code 58103 for valves, LK, Barberi, Seltron, ...

LK DN 15-32 valve  
Barberi DN 15-32 valveLK DN 40-50 valve  
Barberi DN 40-50 valve

Optional U-MV ESBE, VRB, VRG mounting kit, code 58037



FIRŠT®

S11 2P

2-point

Actuators for 3-way mixing valves



2-POINT CONTROL	1 / 0	STOP AT END POSITIONS
-----------------	-------	-----------------------

+55°C  
0°C

Product designation: S11 2P

Rotation direction	2= defined 90°	X	XXX	X	X
Rotation time	050=50s 150=150s				
Voltage	0=230 VAC 3=24 VAC				
Connection	K=cable 1,5m (3x0,75mm <sup>2</sup> ) M=Molex connector				



+

FMV130E



FIRŠT d.o.o

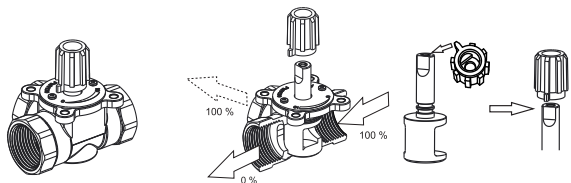
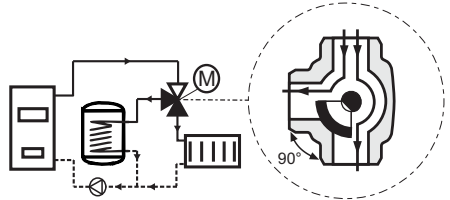
Koroška cesta 56, 3320 Velenje,  
Slovenia

tel: ++386 (0)3 898 35 00

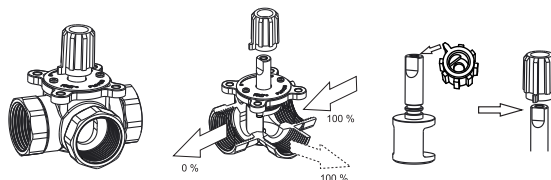
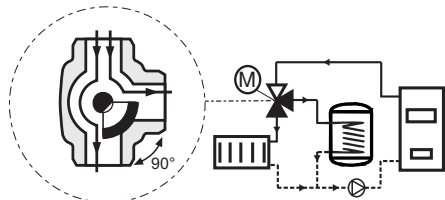
fax: ++386 (0)3 898 35 35

info@first.si, http://www.first.si

**1** Installation example FMV 130E valve - right position  
Diverting application

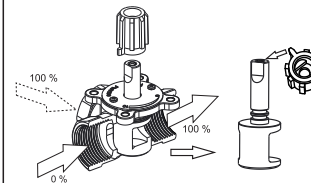
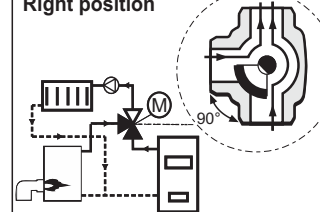


**2** Installation example FMV 130E valve - left position  
Diverting application



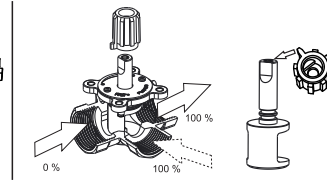
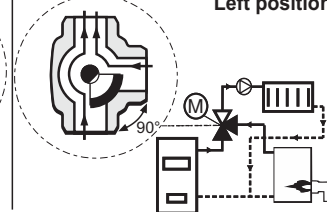
**3** Installation example FMV 130E valve -  
Changeover application

Right position

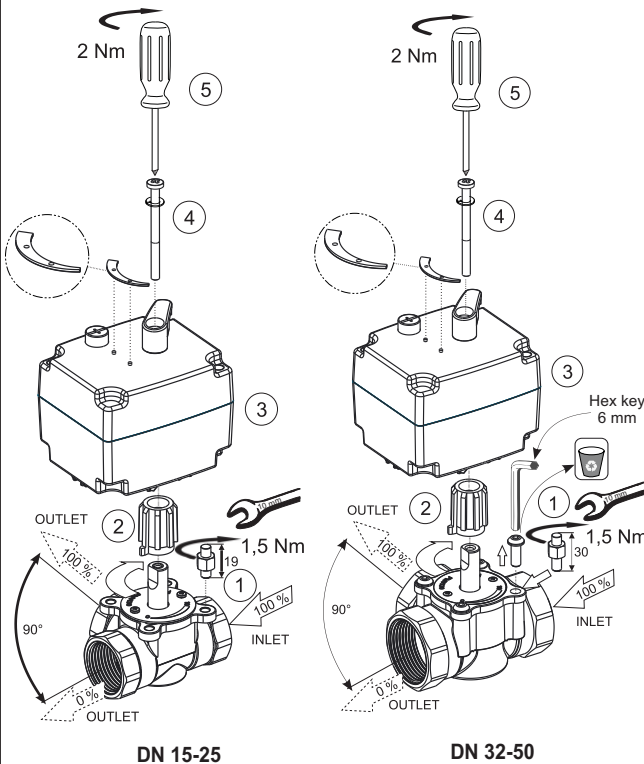


**4** Installation example FMV 130E valve -  
Changeover application

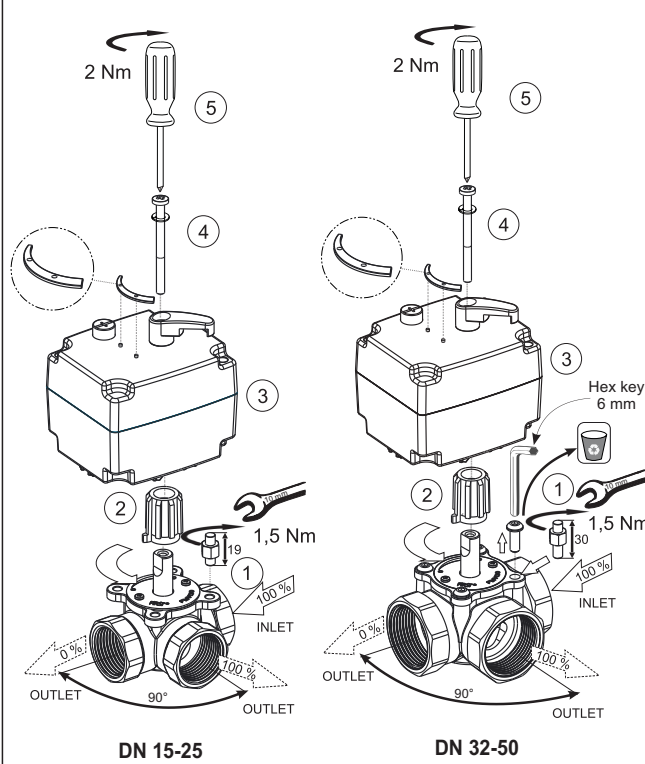
Left position



**1a** DN 15-25 and DN 32-50, enclosed mounting kit code 58104



**2a** DN 15-25 and DN 32-50, enclosed mounting kit code 58104



**3a** Right position  
**4a** Left position

